

VOLTAGE UNBALANCE CORRECTION IN GRID SIDE BY USING MULTI VARIABLE FILTER IN THE PRESENCE OF FUZZY LOGIC CONTROLLER

HEENA TABASSUM (PG Scholar)¹

GUNDALA SRINIVASA RAO (Ph.D)²

¹Department of EEE, SV Engineering college, JNTU (HYD)

²Assistant Professor, Department of EEE, SV Engineering college, JNTU (HYD)

Abstract—This paper presents the control of a grid interfacing inverter with integrated voltage unbalance correction by using fuzzy logic. It is proposed to add an additional function to the inverter to decrease the negative-sequence voltage at the point of connection with the utility grid. Based on symmetric sequence voltage decomposition and using an improved multi-variable filter, the grid-interfacing inverter intentionally absorbs a small amount of negative-sequence current from the grid, thereby helping to correct the negative-sequence voltage. The integrated function and proposed control has been verified in simulations and compared with conventional pi controller.

I. INTRODUCTION

For practical three-phase power systems, problems of voltage unbalance exist. The problems are mainly caused by unbalanced distribution of single-phase and nonlinear loads. Together, these induce unequal voltage drops across transformers and line impedances. These negative sequence voltages are especially troublesome in practical applications, contrary to zero-sequence components which do not exist in three-wire systems. The effects of voltage unbalance are quite severe for electrical machines, power electronic converters, and drives [1].

There are power electronic converters designed for mitigation of voltage unbalance of the utility grid that work by regulating reactive power [2][3], but this approach is not suitable for underground cables where the resistance of a cable dominates its inductance. To maintain a balanced voltage at the load terminals, an often used idea is to inject a series voltage [4][5]. It is straightforward to mitigate the voltage unbalance problem with such converters, but a disadvantage is that they are unused or only lightly

loaded when there are no voltage unbalance problems. For dealing with other power quality problems than voltage unbalance, so-called unified power quality conditioners (UPQC) are proposed and continuously improved. However, the UPQC has no energy storage capabilities [6], and should be extended to cope with distributed generation (DG) [7]. Facing the emerging application of distributed generation, power electronics-based grid-interfacing inverters are playing an important role in interfacing DGs to the utility grid. In addition to conventional delivery of electricity, ancillary functionality for improvement of power quality problems is being introduced into grid-interfacing inverters [8][9].

This does not require more hardware, since the feedback variables for this control are already available. By controlling the negative-sequence currents, which induce opposite negative-sequence voltage drops on the line impedances, the objective of eliminating negative sequence voltages at the point of connection (PoC) with the grid may be achieved. To investigate the effectiveness of the proposed function, a three-phase four-wire inverter is used to control voltage unbalance correction. The employed inverter operates normally when the utility voltages are balanced, and when unbalanced, performs compensation automatically for negative-sequence voltage, based on utility voltage unbalance factor (VUF) [1]. To this aim, the analysis of negative-sequence current control and a high performance detection for symmetrical sequences are introduced in the following. Then, the inverter control scheme and reference signal generation are presented. Finally, the proposed fuzzy logic control methods are verified by simulations, and experimentally tested using a matlab software.

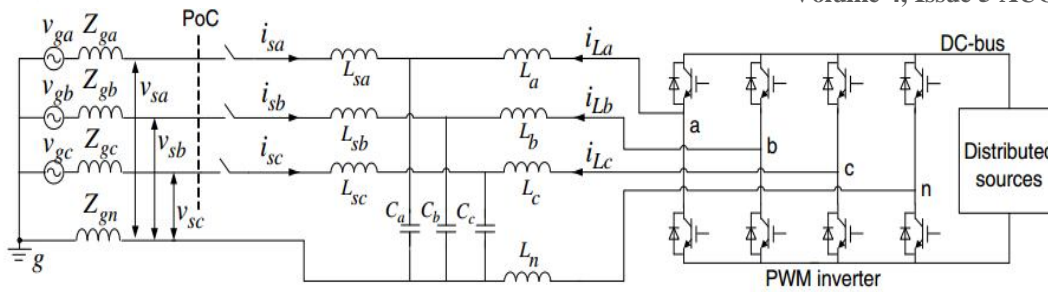


Fig. 1. Three-phase four-wire grid-interfacing inverter at PoC.

II. GRID-INTERFACING INVERTER WITH INTEGRATED VOLTAGE UNBALANCE CORRECTION

Fig. 1 shows the structure of a three-phase four-wire grid-interfacing system being connected to the utility grid at the PoC through LCL filters. It normally synchronizes with the utility grid and delivers electrical energy to the grid from the DC-bus when pre-regulated distributed sources are connected. The voltage unbalance correction function is added, which intentionally regulates negative sequence currents. Note that, in order to obtain a maximum power factor, most grid-interfacing inverters deliver only positive-sequence currents under either balanced or unbalanced conditions. Therefore, the development of this proposed controller differs from the conventional one, and its design will be presented in the next sections of this paper. In view of unbalanced situations, a four-leg inverter topology is used as the circuit to eliminate zero-sequence currents.

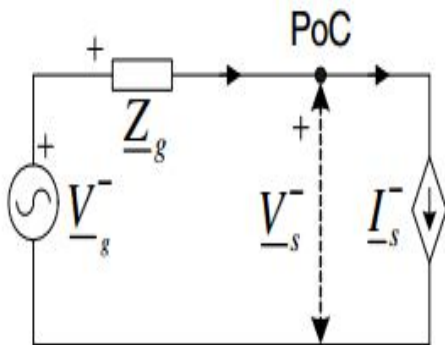


Fig. 2. Negative-sequence equivalent model.

With the theory of symmetric decomposition for three-phase systems [10], unbalanced grid voltages can be divided into three groups, namely positive, negative, and zero sequence voltages. Similarly,

current quantities can also be separated. By disregarding the mutual coupling between the grid

lines in Fig. 1, an equivalent circuit model for each group of sequence components can be derived [11]. The diagram for negative-sequence components is shown in Fig. 2, where the superscript “-” denotes negative sequence. Similarly, the superscript “+” denotes positive sequence. Phasors \underline{V}_g^- and \underline{V}_s^- (in the following, complex numbers are denoted with a bar subscript) are the negative-sequence voltages of the utility grid and at the PoC, respectively. Current \underline{I}_s^- is the negative-sequence current controlled by the grid-interfacing inverter. The equivalent line impedance is represented by \underline{Z}_g , the equivalent impedance of the utility grid when the line impedances of the three phases are assumed symmetrical.

Accordingly, a phasor diagram showing the change for negative-sequence fundamental current is drawn in Fig. 3. By changing the amplitude and phase of the negative-sequence current \underline{I}_s^- , the negative-sequence voltage \underline{V}_s^- can be regulated through the voltage drops across the line impedance. For a given amplitude \underline{I}_s^- , the voltage changes along the dashed circle and reaches a minimum value at the point M where θ^- (the phase angle between negative-sequence voltage and current) equals the negative of impedance angle of \underline{Z}_g 's.

Similarly, zero-sequence voltages at the PoC can be compensated by regulating the zero-sequence currents within the system. This paper only concentrates on the correction of negative-sequence voltages, considering zero-sequence voltages do not exist in case of three-wire systems. Of course, zero-sequence voltages can be isolated by transformers

when needed. Furthermore, It is noted that measurements of zero-sequence components can be done simply by adding three-phase quantities, while accurate positive- and negative-sequence components are difficult to be determined. Therefore, zero-sequence voltage correction can be trivially added to the control based on the proposed fuzzy logic control scheme for negative-sequence voltage correction and is not discussed in this paper.

III. CONTROL SCHEME

A. Determination of Negative-sequence Currents

Fig. 3 illustrates the basic principle of how to correct unbalanced voltage at the PoC with sequence-current control. It is suggested to determine the negative-sequence currents based on the voltage unbalance factor. To assess unbalanced voltages at the PoC, the voltage unbalance factor, K_{VUF} is defined as the ratio between the amplitude of the negative-sequence voltage V_s^- and the amplitude of the positive-sequence voltage V_s^+ . The following constraint equation is proposed to calculate the desired current amplitude I_s^- :

$$\frac{I_s^-}{I_s^+} = \frac{V_s^-}{V_s^+} = K_{VUF} \quad (1)$$

Where I_s^+ is the amplitude of the positive-sequence current. Then, the resulting I_s^- is derived based on the ratio of unbalance voltages at the PoC from (1). However, the voltage unbalance factor at the PoC varies with the controlled negative-sequence currents, because the controller utilizes feedforward measurements of K_{VUF} and operates in an open-loop. Consequently, this strategy may cause the value of K_{VUF} in (1) to vary. To ensure a stable correction, a smooth update method for K_{VUF} is added to the control. The flowchart shown in Fig. 4 illustrates how to derive the final I_s^- . The currently measured quantity is referred to as $K_{VUF(n)}$, and the previous one is $K_{VUF(n-1)}$. In Fig. 4, the minimum threshold (K_{min}) of negative-sequence correction is defined according to practical demands, and a coefficient denoted by λ is introduced for smooth regulation when decreasing the output value of K_{VUF} . Note that, for system protection, the current rating of the inverters is always checked before returning I_s^- .

The factor K_{VUF} is essential to get the amplitude of negative-sequence currents. Thus the separation of sequence voltages is central to get the value of K_{VUF} , as well as to the synchronization with the utility grid. For unbalanced or distorted grid voltages,

a multi-variable filter was introduced in [12] for detecting the positive-sequence component in the stationary frame. After modification, this filter is able to directly filter out the fundamental positive and negative-sequence vectors. The following mathematically demonstrates the multi-variable filter for symmetric sequence decomposition. For unbalanced distorted voltages, the positive- and negative-sequence components are in the α - β frame as expressed by

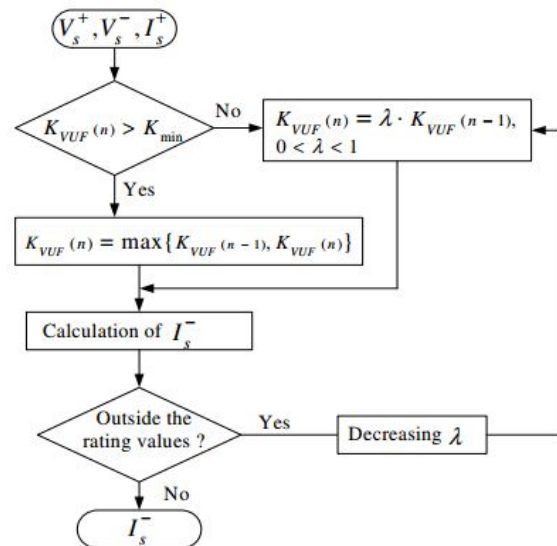


Fig. 3. Flow chart of K_{VUF} determination

B. Positive- and Negative-Sequence Detection

$$\begin{aligned} \underline{v}_{\alpha\beta}(t) &= v_{\alpha}(t) + jv_{\beta}(t) \\ &= \sum_{k=1}^{\infty} (\underline{v}_k^+ e^{jk\omega_1 t} + \underline{v}_k^- e^{-jk\omega_1 t}) \end{aligned} \quad (2)$$

Where k denotes the harmonic number, ω_1 denotes the fundamental radian frequency, and the superscript symbol “o” denotes conjugate. Let us look for a filter $\underline{G}^+(t)$, which $\underline{v}_{\alpha\beta}(t)$ can damp all harmonic components of but the fundamental positive-sequence component in the stationary frame. That is,

$$\underline{v}_{\alpha\beta}(t) * \underline{G}^+(t) = \underline{v}'_{\alpha\beta}(t) \quad (3)$$

Where the “*” denotes a convolution product, and

$$\underline{v}'_{\alpha\beta} = \underline{v}_k^+ e^{jk\omega_1 t} + \sum_{k=3,5,\dots}^{\infty} \underline{U}_k^+ e^{jk\omega_1 t} + \sum_{k=3,5,\dots}^{\infty} \underline{U}_k^- e^{jk\omega_1 t} \quad (4)$$

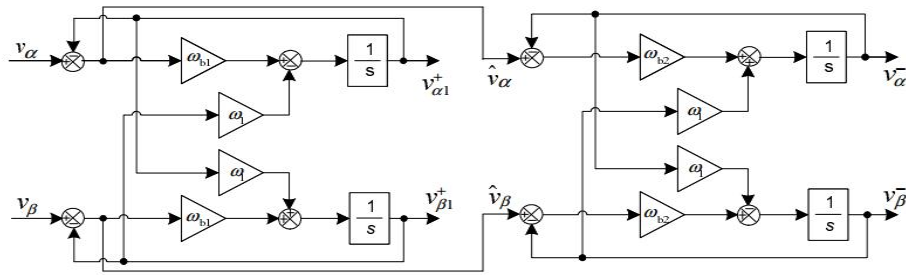


Fig. 4. Implementation diagram of the multi-variable filter.

$\|\underline{U}_k^+\| \ll \|\underline{V}_1^+\|$ and $\|\underline{U}_k^-\| \ll \|\underline{V}_1^-\|$.
Otherwise stated $\underline{v}'_{\alpha\beta}(t) \approx \underline{v}'_{\alpha\beta 1}(t) = \underline{V}_1^+ e^{jk\omega_1 t}$, the fundamental positive-sequence component of $v_{\alpha\beta}(t)$ as defined in (2).

By multiplying $\underline{v}_{\alpha\beta}(t)$ and $\underline{v}'_{\alpha\beta}(t)$ with $e^{-jk\omega_1 t}$ respectively, which corresponds to a transformation to a positive synchronous rotating frame (PSRF), we obtain from (2) and (3)

$$\underline{v}_{\alpha\beta}(t) e^{-jk\omega_1 t} = \underline{V}_1^+ + \sum_{k=1}^{\infty} (\underline{V}_k^+ e^{jk\omega_1 t} + \underline{V}_k^- e^{-jk\omega_1 t}),$$

$$\underline{v}'_{\alpha\beta}(t) e^{-jk\omega_1 t} = \underline{V}_1^+ + \sum_{k=1}^{\infty} (\underline{U}_k^+ e^{jk\omega_1 t} + \underline{U}_k^- e^{-jk\omega_1 t}) \quad (5)$$

It can be seen that the fundamental positive-sequence voltage performs as a DC quantity in the PSRF. Therefore, a simple first order filter $\underline{H}(t)$ with

$$\mathcal{L}[\underline{H}(t)] = \underline{H}(s) = \frac{\omega_b}{s + \omega_b} \quad (6)$$

Where ω_b is the corner frequency, is sufficient to get $\underline{v}'_{\alpha\beta}(t) e^{-jk\omega_1 t}$ from $\underline{v}_{\alpha\beta}(t) e^{-jk\omega_1 t}$ under the conditions of (4). This can be expressed with

$$(\underline{v}_{\alpha\beta}(t) e^{-jk\omega_1 t}) * \underline{H}(t) = \underline{v}'_{\alpha\beta}(t) e^{-jk\omega_1 t} \quad (7)$$

Applying Laplace

$$\underline{v}_{\alpha\beta}(s + j\omega_1) \underline{H}(s) = \underline{v}'_{\alpha\beta}(s + j\omega_1) \quad (8)$$

Substituting $s \leftarrow s - j\omega_1$ into (6) and (8), it follows that

$$\underline{v}_{\alpha\beta}(s) \cdot \frac{\omega_b}{s - j\omega_1 + \omega_b} = \underline{v}'_{\alpha\beta}(s) \quad (9)$$

From (3), we also have

$$\underline{v}_{\alpha\beta}(s) \underline{G}^+(s) = \underline{v}'_{\alpha\beta}(s) \quad (10)$$

Therefore, $\underline{G}^+(s)$, the filter we are looking for, in the stationary frame should be equal to

$$\underline{G}^+(s) = \underline{H}(s - j\omega_1) = \frac{\omega_b}{s - j\omega_1 + \omega_b} \quad (11)$$

By expanding (10) to

$$\underline{v}'_{\alpha}(s) + j\underline{v}'_{\beta}(s) = \frac{\omega_b}{s - j\omega_1 + \omega_b} [\underline{v}_{\alpha}(s) + j\underline{v}_{\beta}(s)] \quad (12)$$

the following equations are derived

$$\underline{v}'_{\alpha}(s) = \frac{1}{s} [\omega_b (\underline{v}_{\alpha}(s) - \underline{v}'_{\alpha}(s)) - \omega_1 \underline{v}'_{\beta}(s)]$$

$$\underline{v}'_{\beta}(s) = \frac{1}{s} [\omega_b (\underline{v}_{\beta}(s) - \underline{v}'_{\beta}(s)) - \omega_1 \underline{v}'_{\alpha}(s)] \quad (13)$$

Similarly, the fundamental negative-sequence component follows as

$$\underline{v}_{\alpha\beta}(t) * \underline{G}^-(t) = \underline{v}''_{\alpha\beta}(t) \quad (14)$$

Where

$$\underline{v}''_{\alpha\beta}(t) = \underline{v}_1^0 e^{-jk\omega_1 t} + \sum_{k=3,5,\dots}^{\infty} \underline{U}_k^+ e^{jk\omega_1 t} + \sum_{k=3,5,\dots}^{\infty} \underline{U}_k^- e^{jk\omega_1 t} \quad (15)$$

Or $\underline{v}''_{\alpha\beta}(t) \approx \underline{v}_{\alpha\beta 1}^-$ Similar to (8) and (10), we have

$$\underline{v}_{\alpha\beta}(s - j\omega_1) \cdot \underline{H}(s) = \underline{v}''_{\alpha\beta}(s - j\omega_1)$$

$$\underline{v}_{\alpha\beta}(s) \cdot \underline{G}^-(s) = \underline{v}''_{\alpha\beta}(s), \quad (16)$$

$$\text{Where } \underline{G}^-(s) = \frac{\omega_b}{s + j\omega_1 + \omega_b}$$

Correspondingly, the equations below are derived:

$$\underline{v}''_{\alpha}(s) = \frac{1}{s} [\omega_b (\underline{v}_{\alpha}(s) - \underline{v}''_{\alpha}(s)) - \omega_1 \underline{v}''_{\beta}(s)]$$

$$\underline{v}''_{\beta}(s) = \frac{1}{s} [\omega_b (\underline{v}_{\beta}(s) - \underline{v}''_{\beta}(s)) - \omega_1 \underline{v}''_{\alpha}(s)] \quad (17)$$

Therefore, the detection for $\underline{v}_{\alpha 1}^+ + j\underline{v}_{\beta 1}^+$ and $\underline{v}_{\alpha 1}^- + j\underline{v}_{\beta 1}^-$

are approximately achieved from (13) and (17). These equations can be easily implemented in the α - β frame by digital control, without complicated transformation to the SRF and the inverse transformation. In practical applications, the negative-sequence component is too small to be detected accurately. This is because the input signals involve a large proportion of positive-sequence components which are difficult to damp totally. Alternative signals $\hat{v}_{\alpha\beta}(t)$ with

$$\hat{v}_{\alpha\beta}(t) = \hat{v}_{\alpha}(t) + j\hat{v}_{\beta}(t) = \underline{v}_{\alpha\beta}(t) - \underline{v}_{\alpha\beta 1}^+(t) \quad (18)$$

Where the dominant positive-sequence component is $\underline{v}_{\alpha\beta 1}^+(t) = \underline{v}_{\alpha 1}^+(t) + j\underline{v}_{\beta 1}^+(t)$. Abstracted, and can be used as input signals. This will improve the filtering effect for negative-sequence quantities.

Fig. 5 illustrates the implementation diagram of the multiple-variable filter, where the bandwidth ω_b for the positive- and negative-sequence filter is denoted by ω_{b1} and ω_{b2} respectively (the values can be different and adapted to practical situations). The central frequency ω_1 is set at the fundamental frequency of the grid voltage. In case of grid frequency variations the bandwidth can be increased slightly, or ω_1 can be adaptively updated with the measured fundamental frequency.

A frequency domain multi-variable filter plot is drawn in Fig. 6, based on (10) and the second equation in (16). Due to unity gain and zero phase-shift of the positive-sequence filter at the central frequency (50Hz), $\hat{v}_{\alpha}(t) + j\hat{v}_{\beta}(t)$ can be directly derived, see Fig. 5. This manipulation is equivalent to a notch filter at the positive fundamental frequency, as shown in Fig. 6.

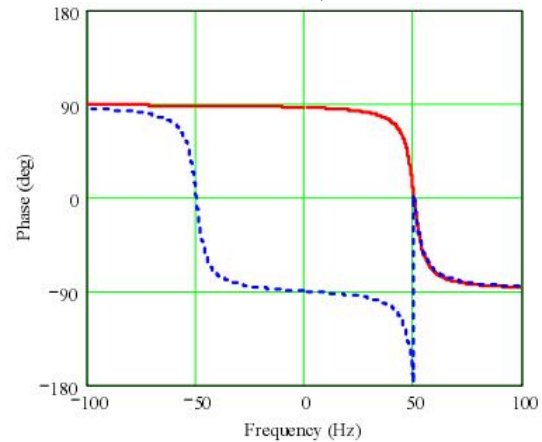
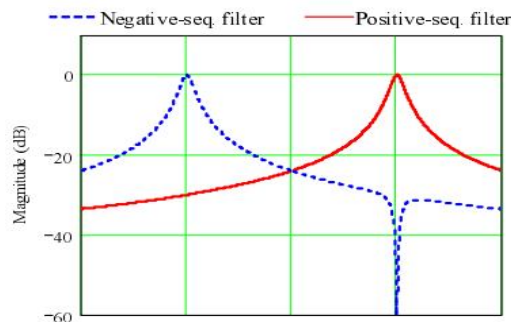


Fig. 5. Multi-variable filter plot in frequency domain with $\omega_1 = 314 \text{ rad/s}$, and $\omega_{b1} = \omega_{b2} = 20$.

C. Reference Signals Generation

Fig. 7 shows the block diagram of the inverter's current reference generator. It consists of the detection of symmetric sequence voltages with a multi-variable filter, the VUF calculation, average power regulation and the signal synthesis. The first two processes have been detailed in the previous two subsections. By utilizing the fundamental positive- and negative-sequence components filtered out by the filter, we can obtain

$$\begin{aligned} v_{\text{mag}}^+ &= \sqrt{v_{\alpha 1}^+{}^2 + v_{\beta 1}^+{}^2} \\ v_{\text{mag}}^- &= \sqrt{v_{\alpha 1}^-{}^2 + v_{\beta 1}^-{}^2} \end{aligned} \quad (19)$$

Where v_{mag}^+ and v_{mag}^- denote the magnitude of fundamental positive- and negative-sequence voltage, respectively. Consequently, two groups of per-unit signals can be derived with divisions, that is $i_{\alpha}^{+*} + j i_{\beta}^{+*}$ and $i_{\alpha}^{-*} + j i_{\beta}^{-*}$ as shown in Fig. 7. According to the principle described in section II, negative-sequence currents are designed to keep a phase-shift θ^- with the negative-sequence voltage. This phase-shift equals

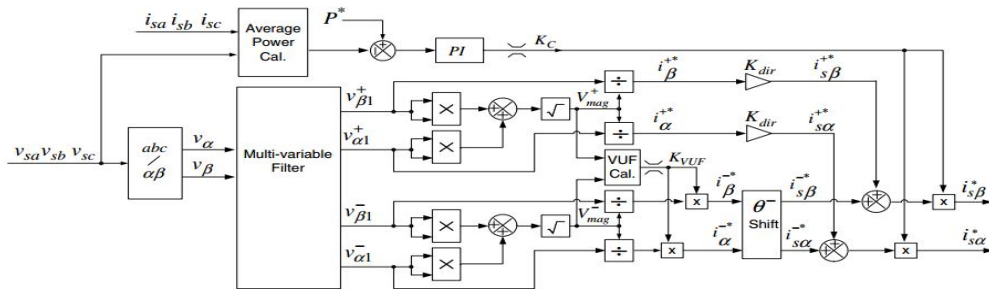


Fig.6. Current reference generation for the inverter control.

the negative line impedance angle for the maximum correction effect. Its mathematical derivation is

$$i_{s\alpha}^{-*} + j i_{s\beta}^{-*} = (i_{\alpha}^{-*} + j i_{\beta}^{-*}) e^{j\theta} \quad (20)$$

The positive-sequence current references are either inphase or in anti-phase with the positive-sequence component of the grid voltage, depending on the desired direction for energy delivery. In this paper, the gain K_{dir} is set -1 in order to deliver energy to the utility grid.

In the average power control loop of Fig. 7, the power reference P^* is given, which can be determined according to the application, such as the active power generated by upstream DG or the power demanded by the downstream utility grid. In order to eliminate the effects of double fundamental frequency ripple on the measured average power, the parameters should have a small proportional gain and a big integration time constant. In this work, the gain is chosen as 0.04 and the time constant is 0.02s. The output of the PI controller is used to regulate the amplitudes of the desired currents with the coefficient K_c . All together, it follows that the current references $i_{s\alpha}^*$ and $i_{s\beta}^*$ are derived in the stationary frame. This is beneficial for the controller design, since the controller presented in the next section is also designed in the stationary frame. The mathematical manipulations to optimally implement the above digital process are not the subject of this paper, and will be discussed elsewhere.

FUZZY LOGIC CONTROLLER DESIGN

Unlike Boolean logic, fuzzy logic allows states (membership values) between 0 or 1. Its major features are the use of linguistic variables rather than numerical variables. Linguistic variables, defined as variables whose values are

sentences in a natural language (such as small and big), may be represented by fuzzy sets [6]. The general structure of an FLC is represented in Fig.7 and comprises four principal components:

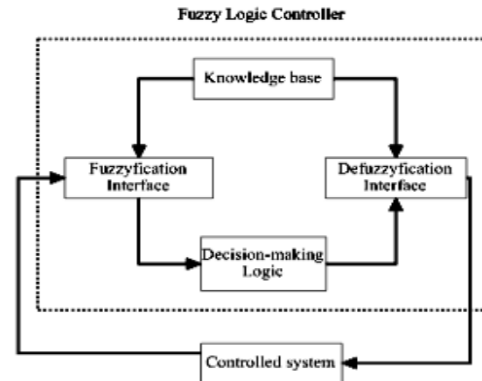


Fig. 7: Basic configuration of FL controller

- a fuzzification interface which converts input data into suitable linguistic values;
- a knowledge base which consists of a data base with the necessary linguistic definitions and control rule set;
- a decision making logic which, simulating a human decision process, infers the fuzzy control action from the knowledge of the control rules and the linguistic variable definitions; and
- a defuzzification interface which yields a nonfuzzy control action from an inferred fuzzy control action.

In this paper, two FL controller block are used for error signal-d and error signal-q as shown in Fig.7. The process also same as before except the controller now is Fuzzy Logic. For both

voltages as given in Table I. It should be pointed out that the afore-mentioned control scheme and the multi-variable filter can also be implemented for distorted grid voltages.

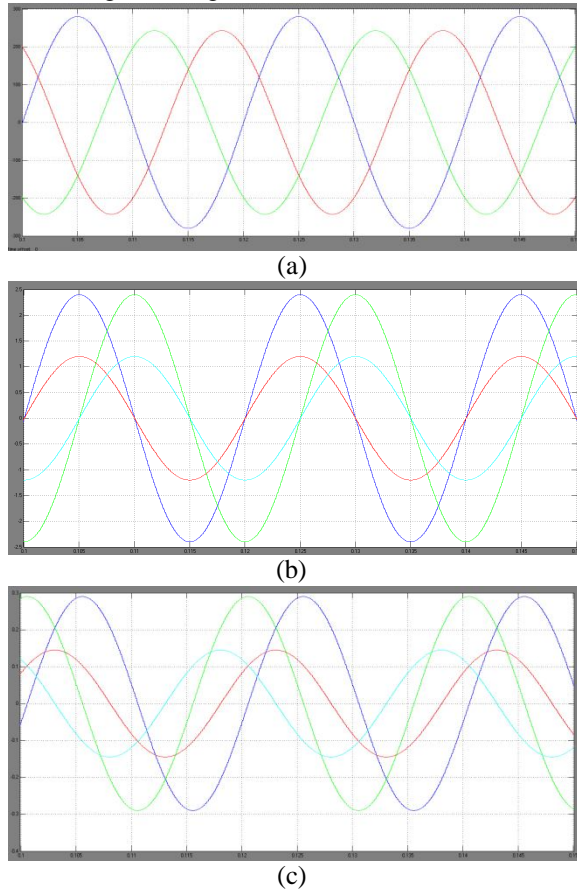


Fig.12. Simulation results of the reference currents generation. (a) unbalanced grid voltages in a-b-c frame, (b) the per-unit positive sequence currents i^+_{sa} and I^+_{sb} in-phase with the positive-sequence voltage, and (c) the negative-sequence current i^-_{sa} and i^-_{sb} lags the negative-sequence voltage by 45 degrees in the α - β frame

To verify the proposed control method with its integrated correction function in a practical set-up, an experiment is carried out with a laboratory prototype that has the same system parameters as the simulation. A 15KV three-phase programmable AC power source (SPITZENBERGER+SPIES DM 15000/PAS) is used to emulate the unbalanced utility grid. The controller is designed on a dSPACE DS1104 setup by using Matlab Simulink. Due to the long computation time of the controller, a sampling frequency of 8 kHz is used. The switching frequency is twice the sampling frequency.

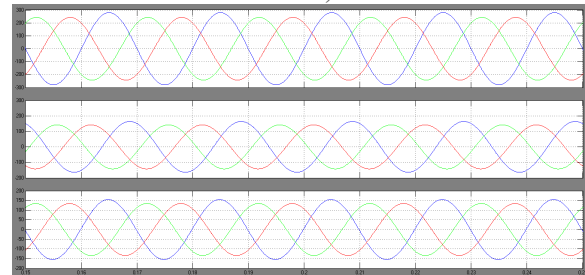


Fig. 13. Experimental results of the grid-interfacing inverter with integrated voltage unbalance correction (a) unbalanced grid voltages, (b) currents delivered by the inverter, and (c) voltages at the PoC.

Fig. 13 (a)-(c) show the experimental waveforms of the grid-interfacing inverter with integrated negative-sequence voltage correction. The plots are the unbalanced grid voltages, the controlled line currents, and the voltages at the PoC, respectively. Using unbalanced grid voltages, the inverter delivers mainly positive-sequence currents to the utility grid and absorbs 10% of the negative-sequence currents.

The effectiveness of the multi-variable filter in detecting positive- and negative-sequence components from

TABLE II
SYSTEM PARAMETERS

Description	Symbol	Value
Grid voltage	V_{ga}	$198V \angle 0^\circ$
	V_{gb}	$171.71V \angle -125.21^\circ$
	V_{gc}	$171.71V \angle 125.21^\circ$
Line impedance	$Z_{ga,b,c}$	$2mH, 0.628\Omega$
Neutral impedance	Z_{gn}	$100\mu H, 0.03\Omega$
Filter inductor	$L_{a,b,c}$	$2mH, 0.03\Omega$
Filter inductor	L_n	$0.67mH, 0.03\Omega$
Filter capacitor	$C_{a,b,c}$	$5\mu F$
DC-bus	V_{dc}	$700V$
Switching freq.	f_{sw}	$16kHz$

unbalanced voltages is shown in Fig. 14. For observing these experimental waveforms of the practical controller are reproduced through D/A converters. The RMS value and phase-shift of the positive- and negative-sequence voltages show almost the same results as the calculation results from a-b-c quantities to α - β quantities. To observe the negative-sequence voltage correction, the results are illustrated in the α - β frame by decomposing voltages from the a-b-c frame. As seen in Fig. 15, the amplitude of the negative-sequence voltage at the PoC is reduced, although the decrease is limited to around 10%. Again note that the line impedance parameters have been exaggerated. In a practical utility grid, for instance 200 μH line impedance is more realistic, and then the decrease would be

around 1% for the same conditions. However, based on multiple modules, the effect of the negative-sequence voltage correction will be more pronounced.

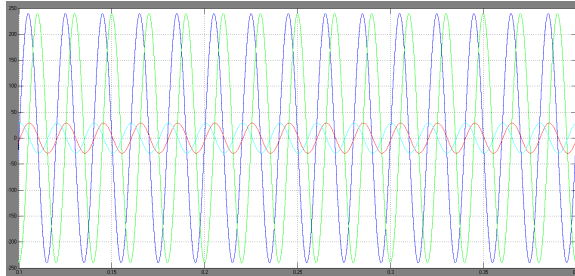


Fig. 14. Experimental waveforms of positive- and negative-sequence voltage detection, where the filtered out fundamental symmetric sequence voltages are derived in the α - β frame.

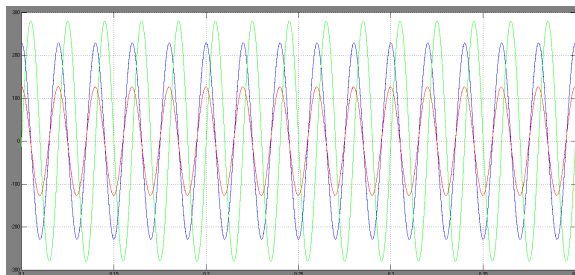


Fig. 15. Experimental results of the negative-sequence voltage correction. The α , β components of the negative-sequence voltage of the PoC v_{α}, v_{β} show a 10% amplitude reduction compared with the negative-sequence voltage of the grid v_{α}, v_{β} .

For an investigation of multiple modules based on the above described single module, an equivalent circuit is used. Fig. 13 shows the per-phase diagram, where many modules are located in different nodes on a distribution bus and represented by current sources. In order for distributed voltage unbalance correction to succeed, multiple inverter modules on the same PoC of a feeder should show the same control behavior. With the system structure shown, the VUF value may be transferred to each module by an information center where measurements are done centrally. Alternatively, the measurement can be done by the inverters locally.

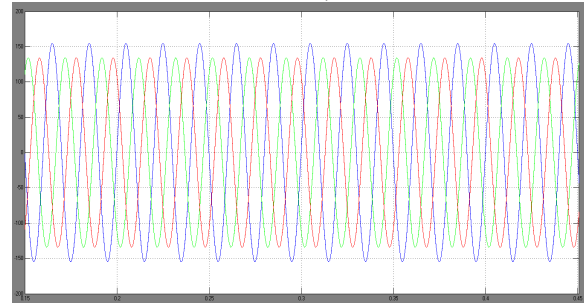


Fig. 16. Experimental waveforms of the negative-sequence voltage correction. The resulting corrected voltages tend to be balanced.

Fig. 15 shows the corrected voltage at the PoC when we simply provide more negative-sequence current. It can be seen that the three-phase voltages tend to be balanced. This generally indicates the effectiveness of distributed voltage unbalance correction. However, it must be noted that the proposed method is only an alternative. It is preferable in an unbalanced situation with small voltage deviation, while the conventional methods are suitable for serious situations with large voltage unbalance.

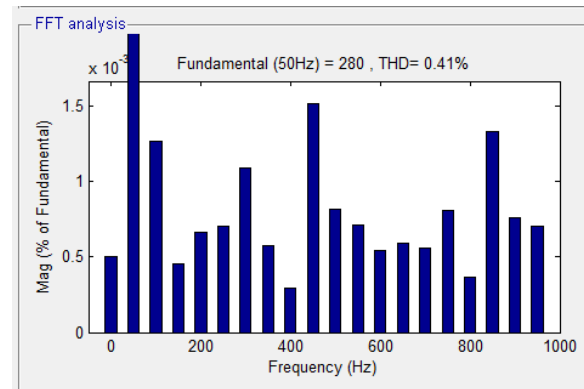


Fig. 17. THD value observed in fuzzy logic controller

V. CONCLUSION

In this paper, the basic principle and detailed fuzzy logic control of grid-interfacing inverters supporting negative-sequence voltage correction has been presented. It has been shown that a grid-interfacing inverter, in addition to its normal operation, can help decrease the negative-sequence voltage at the PoC. Furthermore, the improved multi-variable filter can filter out positive- and negative-sequence components accurately in case of unbalanced/distorted situations in the stationary frame under the fuzzy logic controller. As well as THD value decreased too. The functionality and control

schemare verified by simulation and experimental results of aprototype were given.

V. REFERENCES

[1] Annette von Jouanne and Basudeb (Ben) Banerjee, "Assessment of voltage unbalance," IEEE Trans. Power Del., vol. 16, no. 4, pp.782-790, Oct. 2001.

[2] Hideaki Fujita, and H. Akagi, "Voltage-regulation performance of a shunt active filter intended for installation on a power distribution system," IEEE Trans. Power Electron., vol 22, no. 3, pp. 1046-1053, May 2007.

[3] Kuang Li, Jinjun Liu, and Zhaoan Wang, and Biao Wei, "Strategies and operating point optimization of STATCOM control for voltage unbalance mitigation in three-phase three-wire systems," IEEE Trans. Power Del., vol. 22, no. 1, pp. 413-422, Jan. 2007.

[4] Kalyan K. Sen, "SSSC-static synchronous series compensator theory, modeling, and application," IEEE Trans. Power Del., vol. 13, no. 1, pp. 241-246, Jan. 1998.

[5] Vijay B. Bhavaraju and Prasad N. Enjeti, "An active line conditioner to balance voltages in a three-phase system," IEEE Trans. Ind. Applicat., vol. 32, no. 2, pp. 287-292, Mar./Apr. 1996.

[6] Hideaki Fujita, H. Akagi, "The unified power quality conditioner: the integration of series- and shunt-active filters," IEEE Trans. Power Electron., vol. 13, no. 2, pp. 315-322, Mar. 1998.

[7] Dusan Graovac, V. A. Katic, and A. Rufer, "Power quality problems compensation with universal power quality conditioning system," IEEE Trans. Power Del., vol. 22, no. 2, pp. 968-976, Apr. 2007.

[8] Koen J. P. Macken, Koen Vanthourhout, Jeroen Van den Keybus, Geert Deconinck, and Ronnie J. M. Belmans, "Distributed Control of Renewable Generation Units With Integrated Active Filter," IEEE Trans. Power Electron., vol. 19, no. 5, pp. 1353-1360, Sep. 2004.

[9] G. Jos, B.-T. Ooi, D. McGillis, F. D. Galiana and R. Marceau, "The potential of distributed generation to provide ancillary services," in Proc. IEEE Power Eng. Soc. Summer Meeting, Seattle, WA, July, 2000.

[10] P. M. Andersson, Analysis of faulted power systems, New York: IEEE Press, 1995.

[11] Fei Wang, Jorge L. Duarte, Marcel A. M. Hendrix, "Weighting function integrated in grid-interfacing converters for unbalanced voltage correction," in Proc. International Conf. on Renewable Energy and Power Quality (ICREPO), Santander, Spain, 2008.

[12] M. C. Benhabib and S. Saadate, "A new robust experimentally validated phase locked loop for power electronic control," European Power Electronics and Drives Journal, vol. 15, no. 3, pp. 36-48, Aug. 2005.

[13] R. Teodorescu, F. Blaabjerg, M. Liserre and P.C. Loh, "Proportional-resonant controllers and filters for grid-connected voltage-source converters," IEE Proc.-Electr. Power Appl., Vol. 153, No. 5, pp. 750-762, September 2006.



HEENA TABASSUM, Completed B.Tech in Electrical & Electronics Engineering in 2013 from RAMANANDATIRTHA ENGINEERING COLLEGE, NALGONDA affiliated to JNTUH, Hyderabad and currently pursuing M.Tech in Power Electronics at Sri Venkateswara engineering college, Suryapet, Nalgonda district, Telangana. Area of interest includes Power Electronics. [E-mail: heenatabasum786@gmail.com](mailto:heenatabasum786@gmail.com)



GUNDALA SRINIVASA RAO, He has obtained his B.Tech degree from SVEC, Suryapet in 2010 and M.Tech in Power Electronics from Jawaharlal Nehru Technological University, Hyderabad in 2012. He is currently pursuing PhD at KL University. He has 5 years of teaching experience and presently working as Assistant Professor in EEE Dept. at Sri Venkateswara engineering college, Suryapet, Nalgonda district, Telangana state, India.